



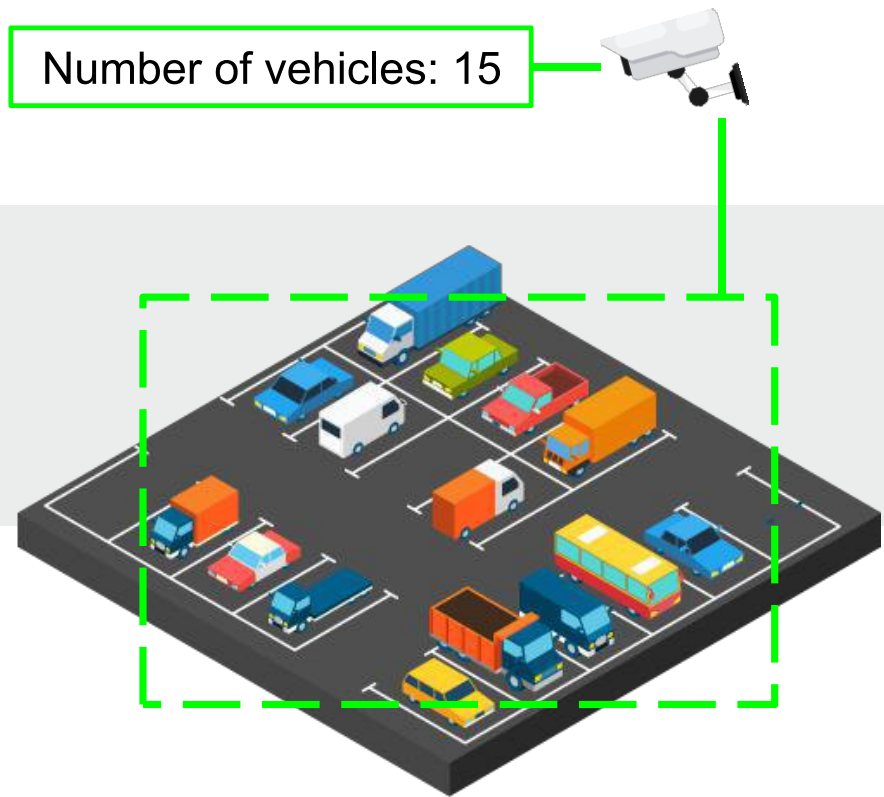
# TRASSIR Parking

monitoring the number of vehicles  
in the parking area

# TRASSIR Parking

## Description

**TRASSIR Parking** is a script-module for monitoring the number of vehicles and time of their stay in the parking area.



# TRASSIR Parking

## Description

The **TRASSIR Parking** operation calls for at least two AutoTRASSIR-30 license plate recognition modules (LPR) (available separately).

When operated in close link with **TRASSIR Parking**, these modules record the moments the vehicle is caught on video cameras.

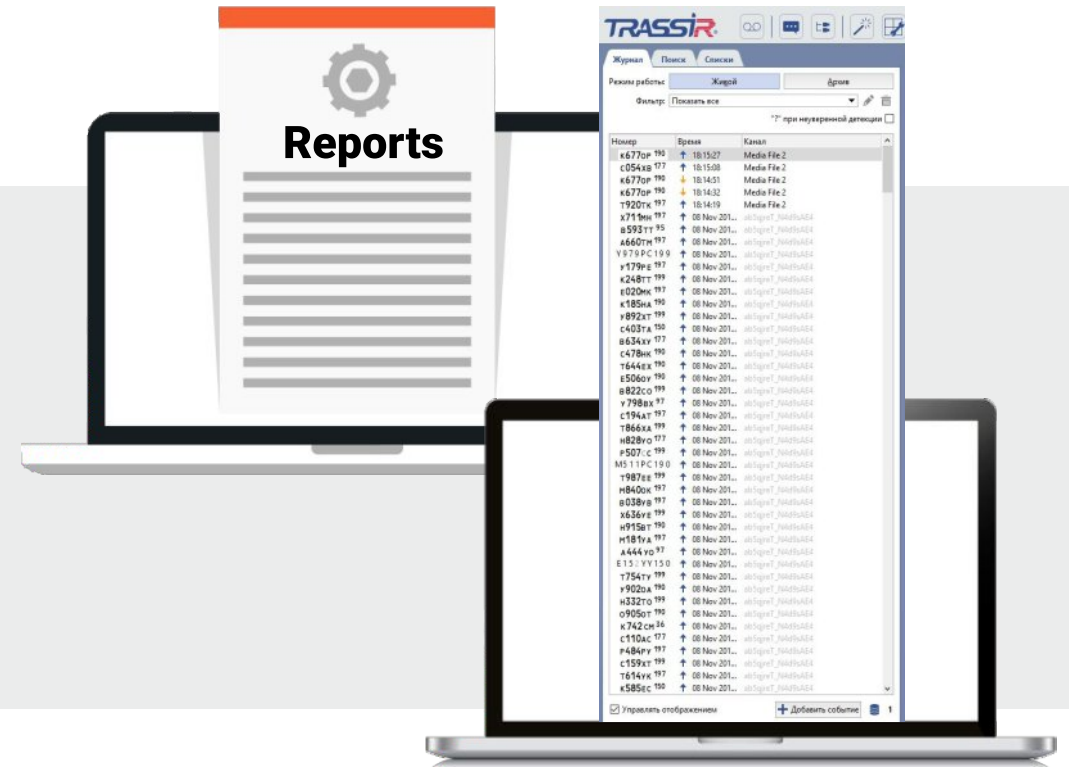


# TRASSIR Parking

## Description

Based on the received data **TRASSIR Parking** generates a list of vehicles with the exact time and date of entry/exit of the vehicle.

The generated reports are supported by screenshots taken at the moment the vehicle crossed control points.



# TRASSIR Parking

For the owners of office buildings and shopping centers

Using the **TRASSIR Parking** module allows owners of office buildings and shopping centers:

- to have a clear picture for presenting parking bills to car owners
- to know the number of vehicles in the parking area

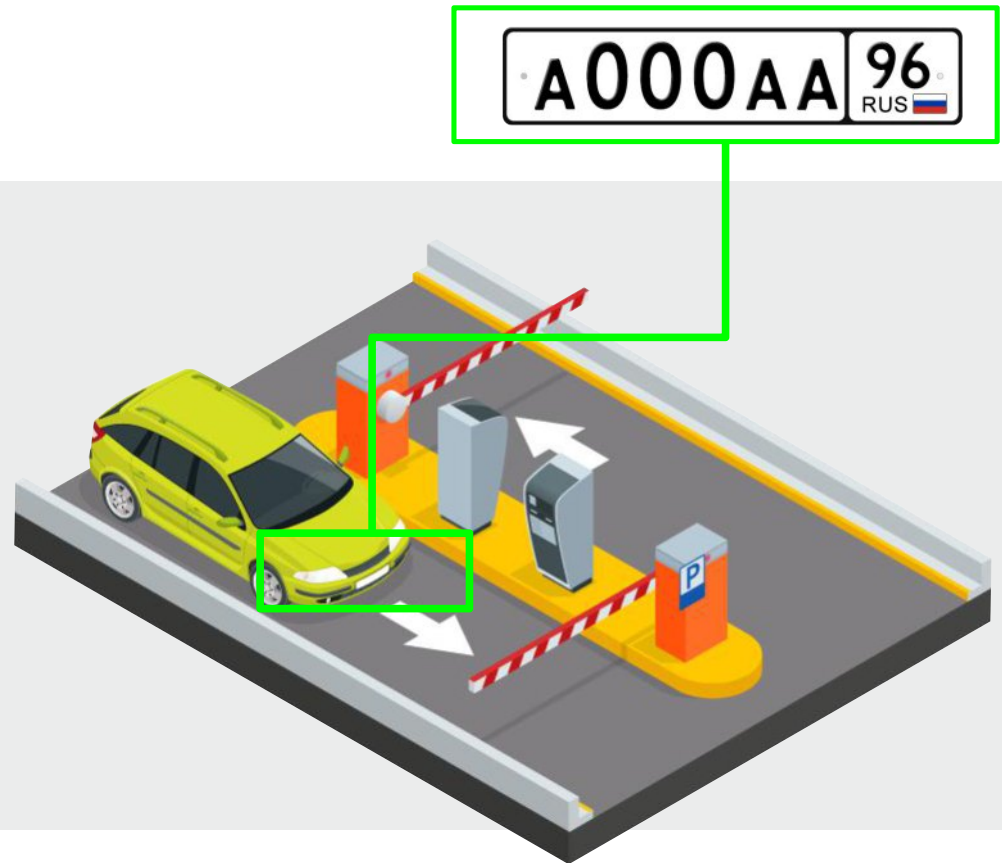


# TRASSIR Parking

To the head of security

The use of the **TRASSIR Parking** module in conjunction with **AutoTRASSIR** and **ACS** allows the security head of the car fleet, warehouse and customs terminals, parking areas, private estates and other facilities:

- to provide automatic recording of all vehicles passing through the entrance/exit gates



# TRASSIR Parking

To the head of security

The use of the **TRASSIR Parking** module in conjunction with **AutoTRASSIR** and **ACS** allows the security head of the car fleet, warehouse and customs terminals, parking areas, private estates and other facilities:

- to optimize the operation of the pass entry system and monitor the time of loading/unloading of goods

**Unloading**  
**Start time: 8:35**

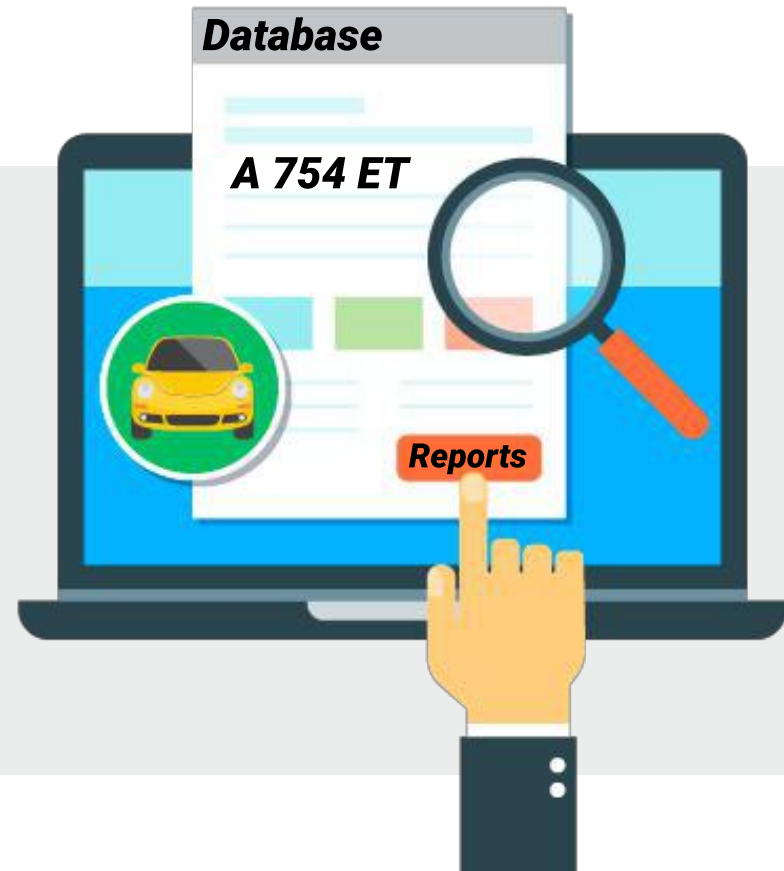


# TRASSIR Parking

## To the head of security

The use of the **TRASSIR Parking** module in conjunction with **AutoTRASSIR** and **ACS** allows the security head of the car fleet, warehouse and customs terminals, parking areas, private estates and other facilities:

- to keep records and a database of vehicles located inside the territory



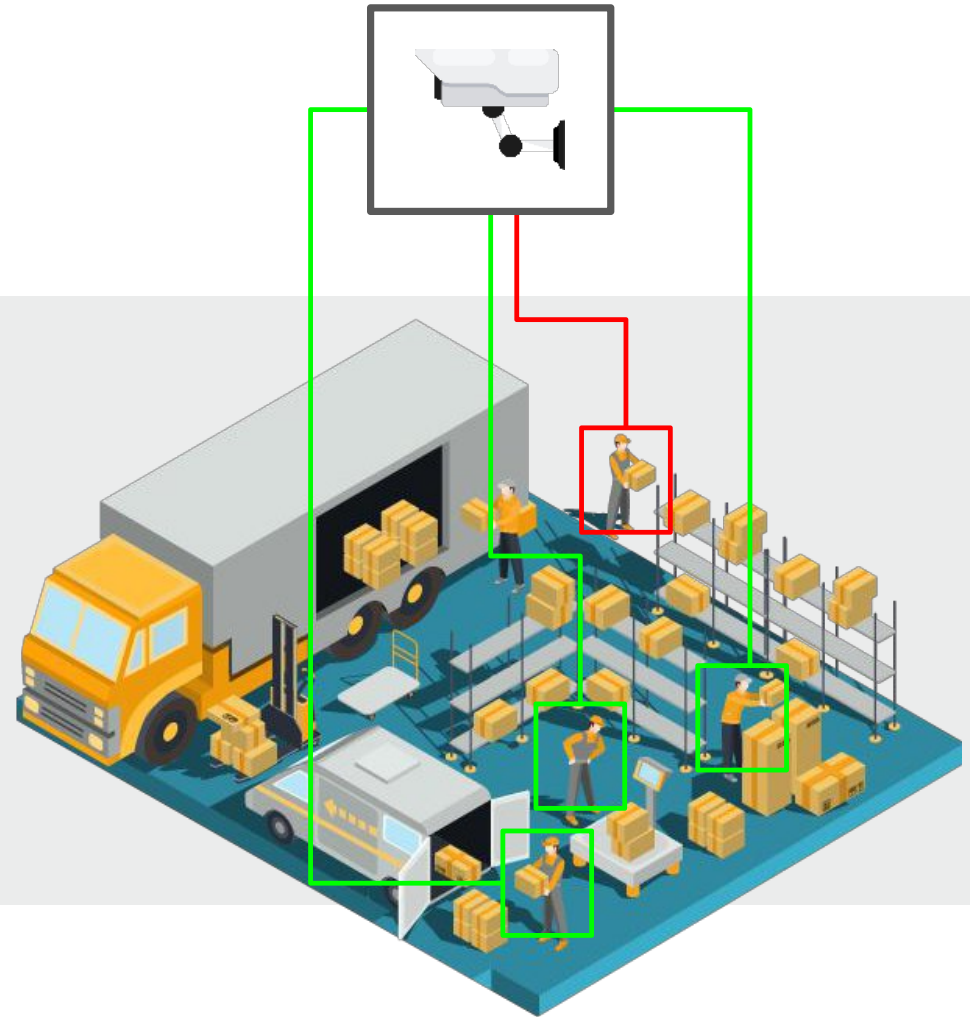


# TRASSIR Parking

To the head of security

The use of the **TRASSIR Parking** module in conjunction with **AutoTRASSIR** and **ACS** allows the security head of the car fleet, warehouse and customs terminals, parking areas, private estates and other facilities:

- to reduce materially the incidence of theft

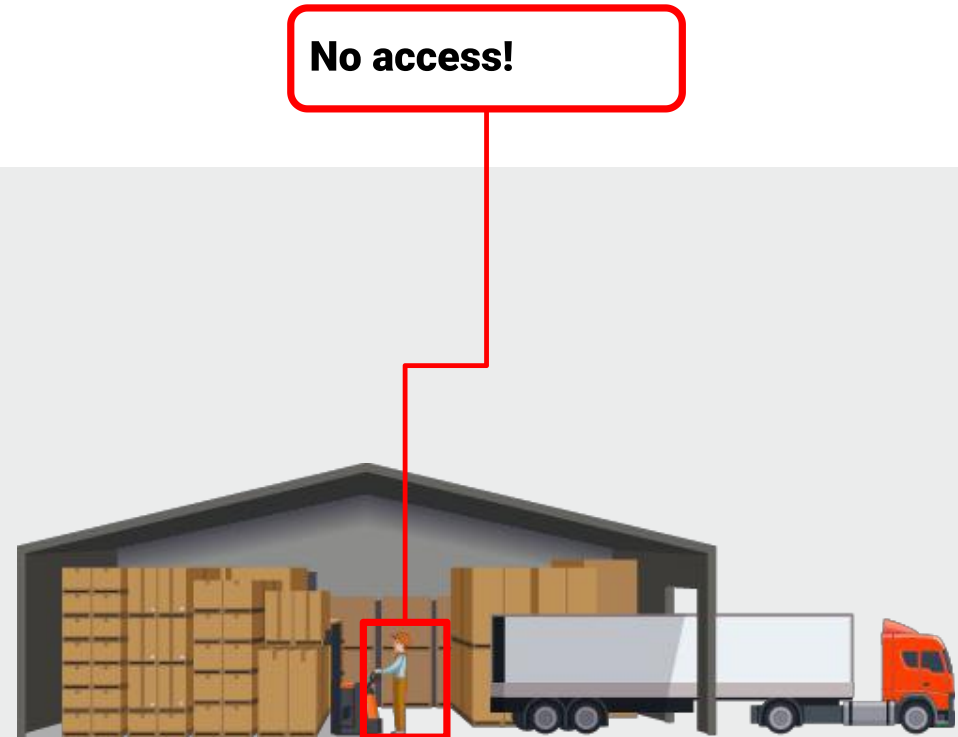


# TRASSIR Parking

To the head of security

The use of the **TRASSIR Parking** module in conjunction with **AutoTRASSIR** and **ACS** allows the security head of the car fleet, warehouse and customs terminals, parking areas, private estates and other facilities:

- to deny access of unwanted visitors to the protected area





# Contacts

 [trassir.com](https://trassir.com)

 +44 208 068 4004

 [welcome@trassir.com](mailto:welcome@trassir.com)

---

Hardware catalog



---

VMS Catalogue



---

Success stories

